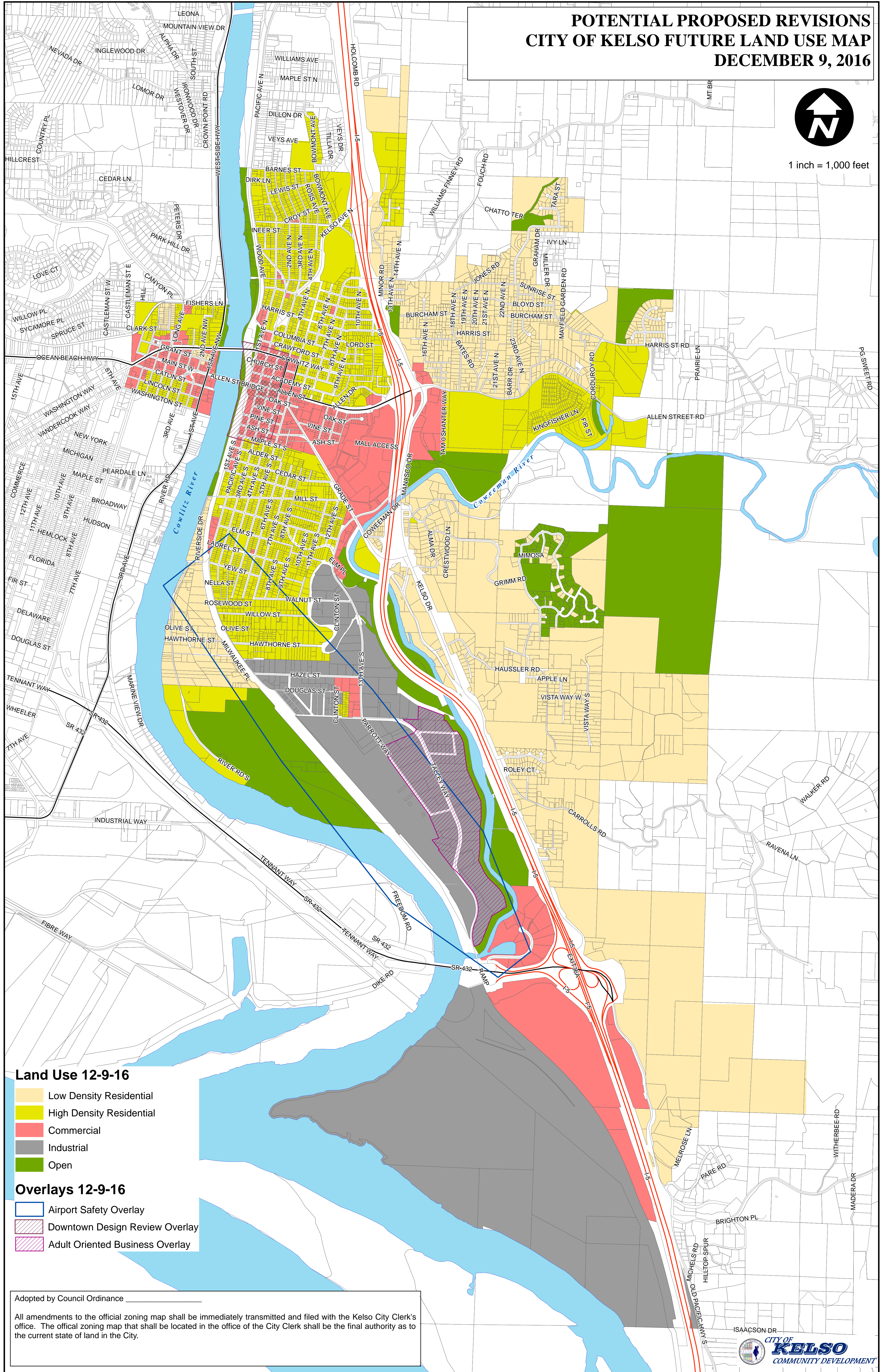


POTENTIAL PROPOSED REVISIONS CITY OF KELSO FUTURE LAND USE MAP DECEMBER 9, 2016



1 inch = 1,000 feet



Land Use 12-9-16

- Low Density Residential
- High Density Residential
- Commercial
- Industrial
- Open

Overlays 12-9-16

- Airport Safety Overlay
- Downtown Design Review Overlay
- Adult Oriented Business Overlay

Adopted by Council Ordinance _____

All amendments to the official zoning map shall be immediately transmitted and filed with the Kelso City Clerk's office. The official zoning map that shall be located in the office of the City Clerk shall be the final authority as to the current state of land in the City.